

152

# PLAT NO. 6 FOREST HILL VILLAGE

IN SECTION 14, TWP. 44 S., RGE. 42 E.  
PALM BEACH COUNTY, FLORIDA

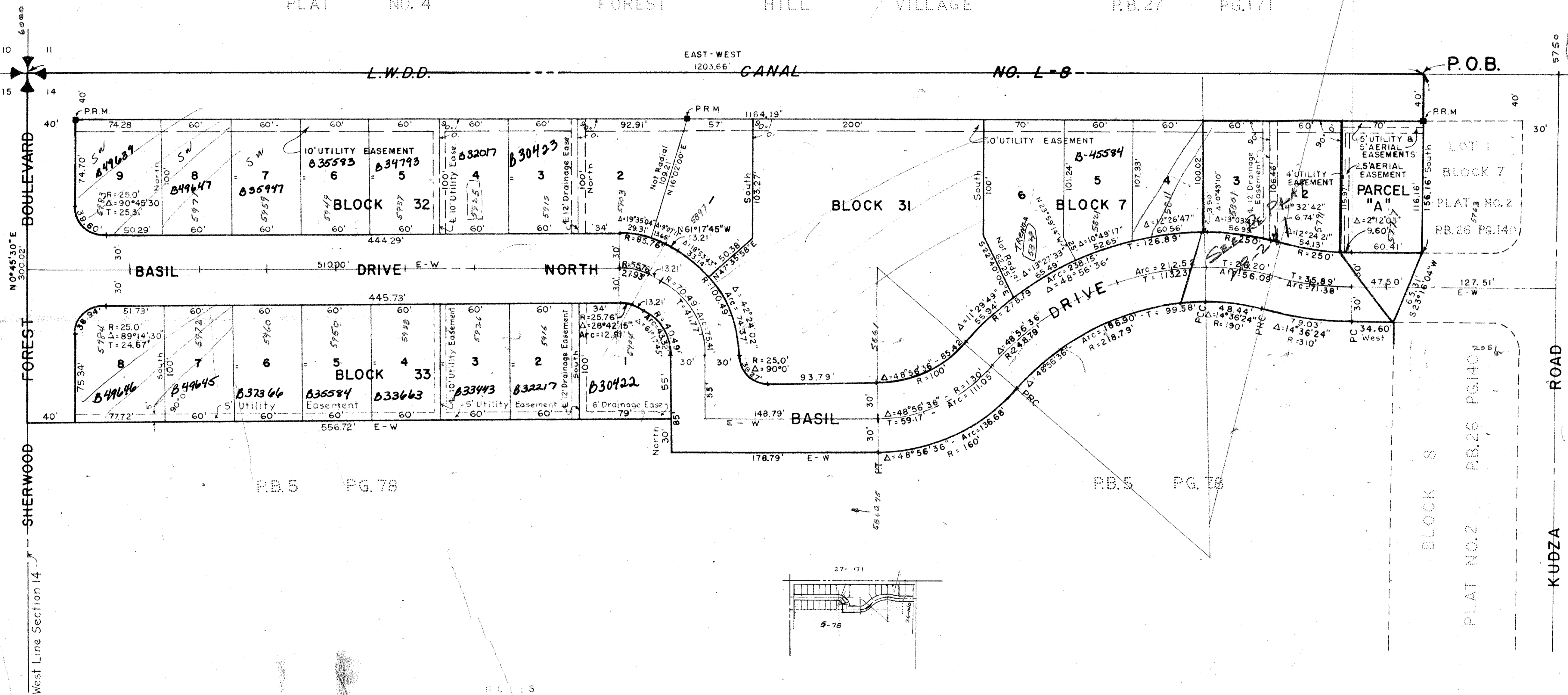
Being a Replat of Part of Lots 49 and 50, Model Land Co. Subdivision, recorded in Plat Book 5, Page 78, Public Records of Palm Beach County, Florida.

**32**  
IN 2 SHEETS SHEET NO. 2

1203.66  
1171.07  
1320.73  
250  
5.3

STATE OF FLORIDA  
COUNTY OF PALM BEACH  
This Plat was filed for record at \_\_\_\_\_ M.  
this \_\_\_\_\_ day of \_\_\_\_\_  
19\_\_\_\_ and duly recorded in Plat Book No. \_\_\_\_\_  
on page \_\_\_\_\_  
JOHN B. DUNKLE, Clerk Circuit Court  
By \_\_\_\_\_ D. C.

PLAT NO. 4 FOREST HILL VILLAGE P.B. 27 PG. 171



- H O L L S
1. Building Setback Lines shall not be required by Palm Beach County Zoning and Building Regulations.
  2. There shall be no buildings or other structures placed on Utility Easements.
  3. There shall be no buildings or any kind of structures or trees or shrubs placed on drainage easements.

1000-240

BROCKWAY, OWEN & ANDERSON  
ENGINEERS, INCORPORATED  
WEST PALM BEACH, FLORIDA

PLAT NO. 6  
FOREST HILL VILLAGE  
IN 2 SHEETS SHEET NO. 2

FIELD	R. E. N.	SCALE: 1" = 50'	Job No. 67-130
OFFICE	D. M. W.		
DR BY:	L. N. D.	DATE: March, 1967	Dwg. No.
FIELD BK	F-65 PG 36		

H.C. 35-A

28/152

DRAWING NUMBER  
28-152

DRAWING NUMBER

DRAWING NUMBER

DRAWING NUMBER

PLAN HOLD CORPORATION • IRVINE, CALIFORNIA  
REGISTERED PROFESSIONAL ENGINEER  
REGISTERED NUMBER 07048  
PERSONS LIST OF PART OF THE LAW

PLAN HOLD CORPORATION • IRVINE, CALIFORNIA  
REGISTERED PROFESSIONAL ENGINEER  
REGISTERED NUMBER 07048

PLAN HOLD CORPORATION • IRVINE, CALIFORNIA  
REGISTERED PROFESSIONAL ENGINEER  
REGISTERED NUMBER 07048

PLAN HOLD CORPORATION • IRVINE, CALIFORNIA  
REGISTERED PROFESSIONAL ENGINEER  
REGISTERED NUMBER 07048